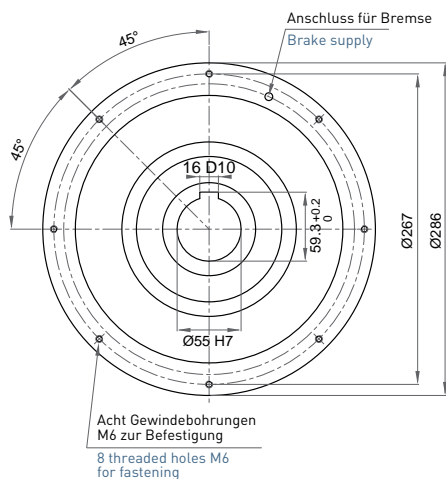


# Serie B.2500

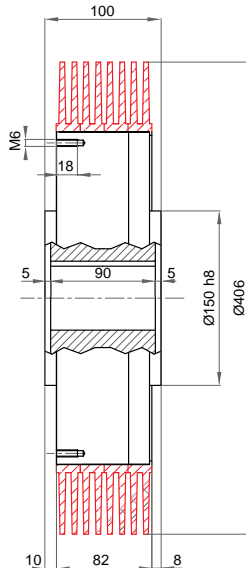
## B.2500

Bremse  
brake



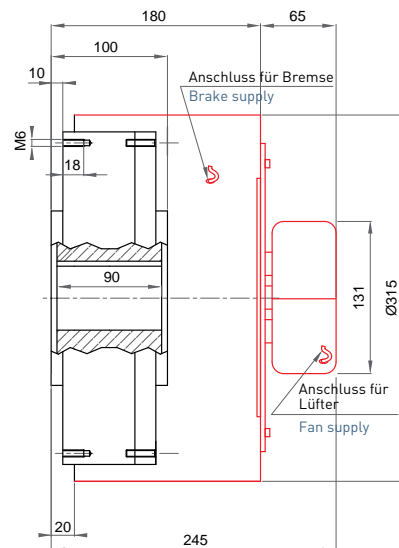
## B.2500.R

Bremse mit Radiator  
brake with radiator



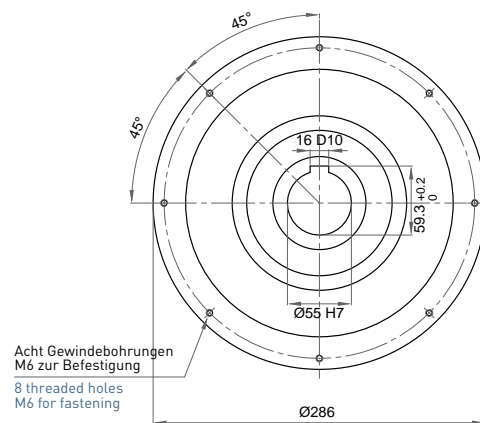
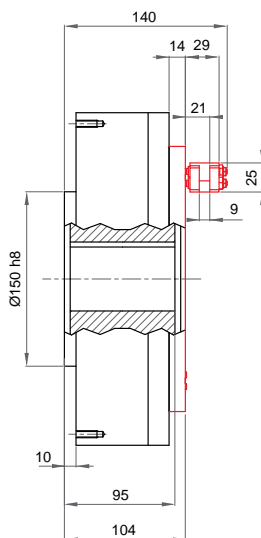
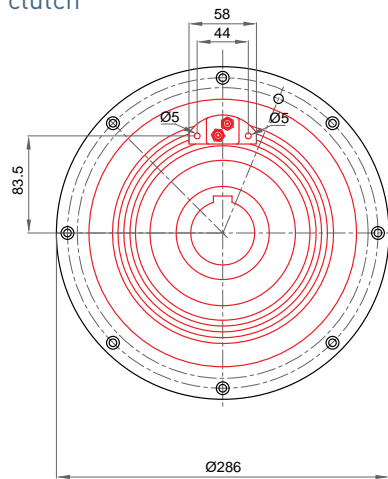
## B.2500.V

Bremse mit Lüfter  
brake with fan



## C.2500

Kupplung  
clutch



Max. Drehmoment / Torque	250 Nm
Restdrehmoment / Residual torque	3 Nm
Max. Stromaufnahme / Max. current	1 A
Widerstand / Resistance	25,5 Ohm
Spannung / Tension	24 V (PWM)
Verlustleistung / Power dissipation	500 W
Verlustleistung mit Radiator / Power dissipation with radiator	900 W
Verlustleistung mit Lüfter / Power dissipation with fan	2000 W
Verlustleistung der Kupplung bei 500 U/min. / Power dissipation of the clutch at 500 RPM	1440 W
mit Radiator bei 500 U/min. / with radiator at 500 RPM	1650 W
Verlustleistung der Kupplung bei 1000 U/min. / Power dissipation of the clutch at 1000 RPM	1800 W
mit Radiator bei 1000 U/min. / with radiator at 1000 RPM	2400 W
U/min. min.-max. / RPM min-max	40-1800
Max. Arbeitstemperatur / Max. working temperature	70 °C
Gewicht kg / Weight kg	32 (B.2500) / 38 (B.2500.R) / 38 (B.2500.V) 33 (C.2500) / 40 (C.2500.R)

